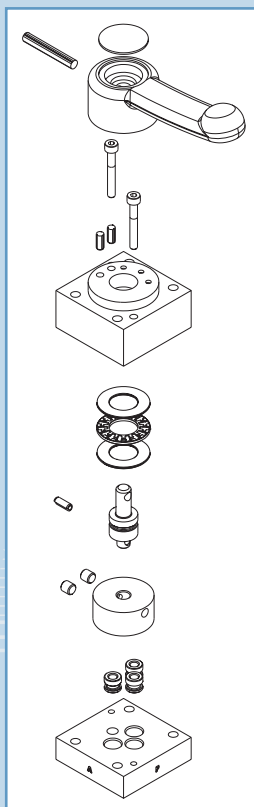


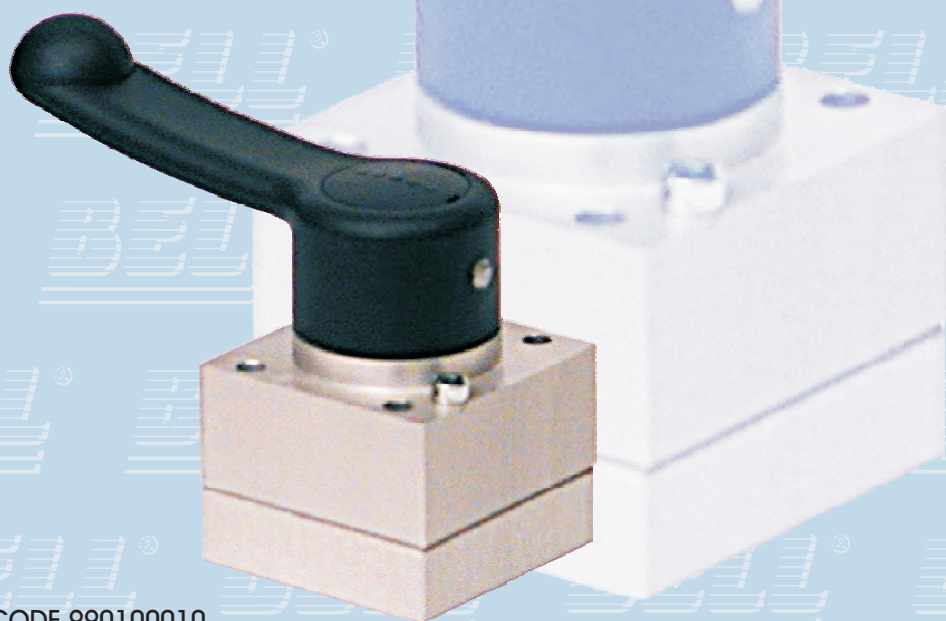
Distributore manuale

Manual directional control valve

Manueller Verteiler



ITEM CODE 990100010



Di serie sull'unità pneumo-idraulica UPM

Standard on the air-oil booster UPM

Serienmäßig auf UPM lufthydraulische Einheit

Centro aperto
Attacco CETOP 3
Pressione massima 700 bar

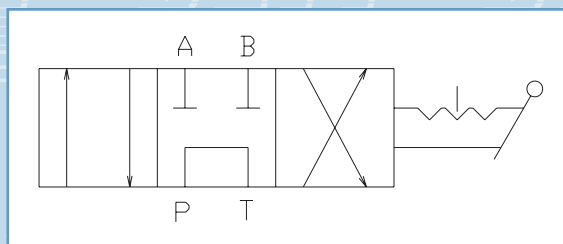
Open centre
CETOP 3 base
Max pressure 700 bar

Öffne Stelle (open centre)
CETOP 3 Anschluss
Max Druck 700 bar

Distributore manuale a 3 posizioni,
4 vie ideale per l'azionamento di
cilindri a semplice o doppio effetto.

3-position/4-ways manual control
valve, useful to operate single or
double acting cylinders.

3-Position und 4-Fach manueller
Verteiler für die Bedienung der ein
und doppelt wirkend Zylinder geeignet.



BELL®

via F. De Pisis, 5 - Z.I. Mancasale
42100 Reggio Emilia - Italy
P. IVA 01171160359

Tel. +39 0522 505.911
Fax +39 0522 514.204
E-mail: bell@bell.it - www.bell.it